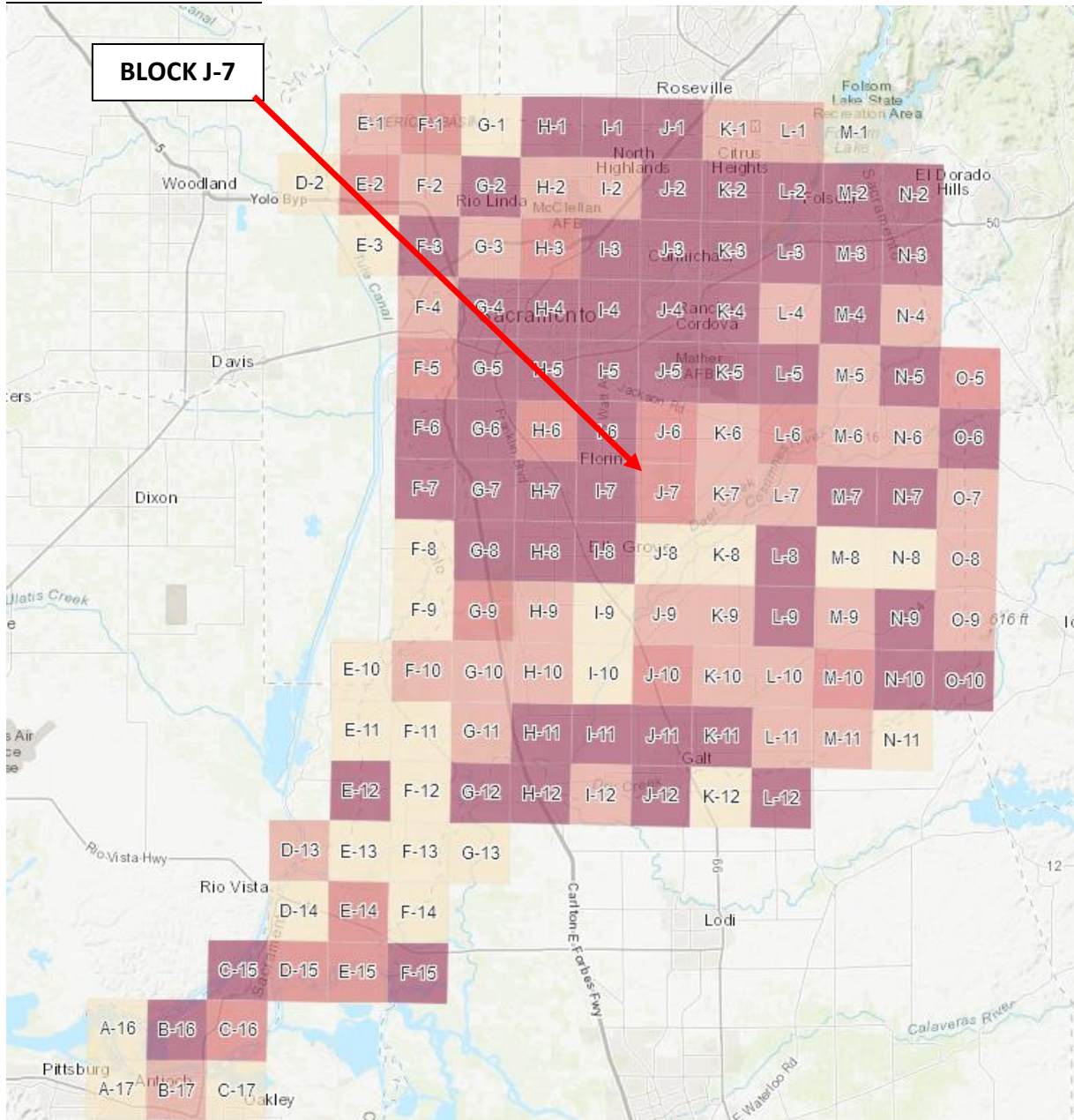


BLOCK J-7 – mid Sac County

Includes:

- Mix of open space, grassland, pasture, open ag, rural, and suburban residential
- Patches of wetlands and farm ponds
- Southern half of Wildhawk Golf Club

OVERVIEW MAP



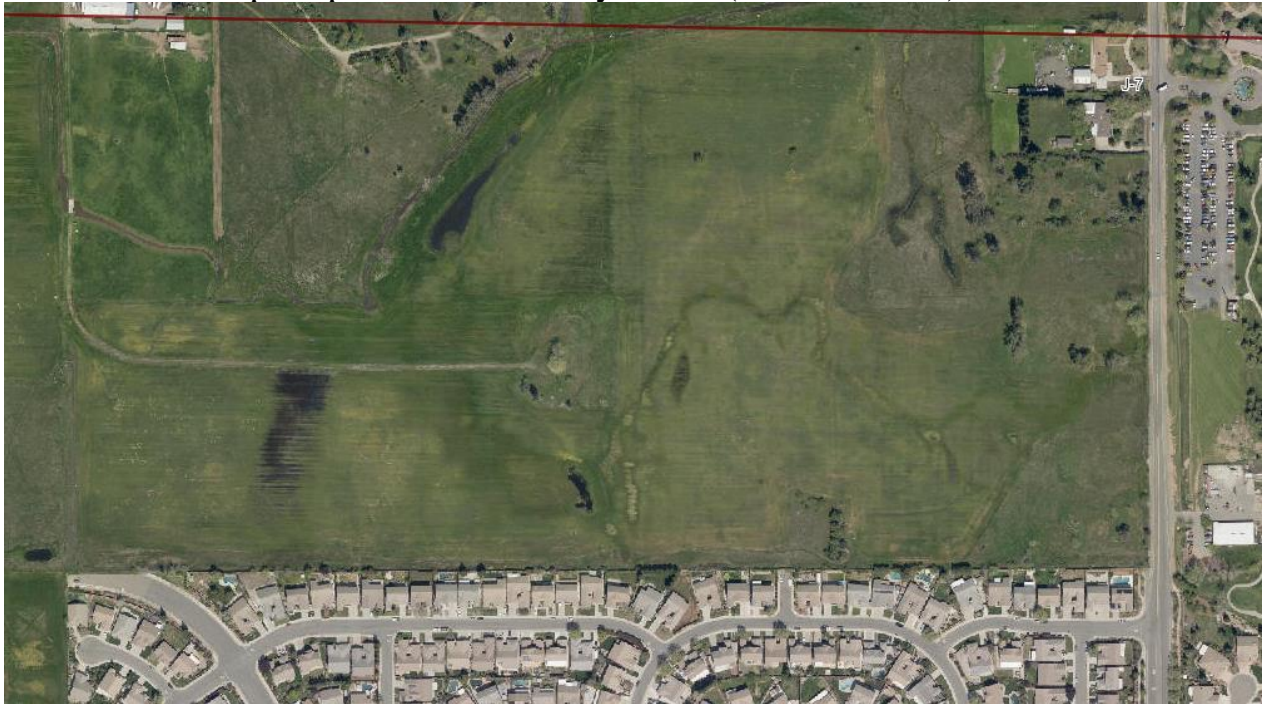
BLOCK J-7 STREET VIEW



BLOCK J-7 AERIAL VIEW



BLOCK J-7 – Open space west of Vineyard Rd (access limited)



Some likely breeding species NOT yet confirmed in this Block:

- Mallard**
- Killdeer**
- Black Phoebe**
- Western Kingbird**
- Northern Mockingbird**
- House Finch**
- Western Meadowlark**
- Red-winged Blackbird**