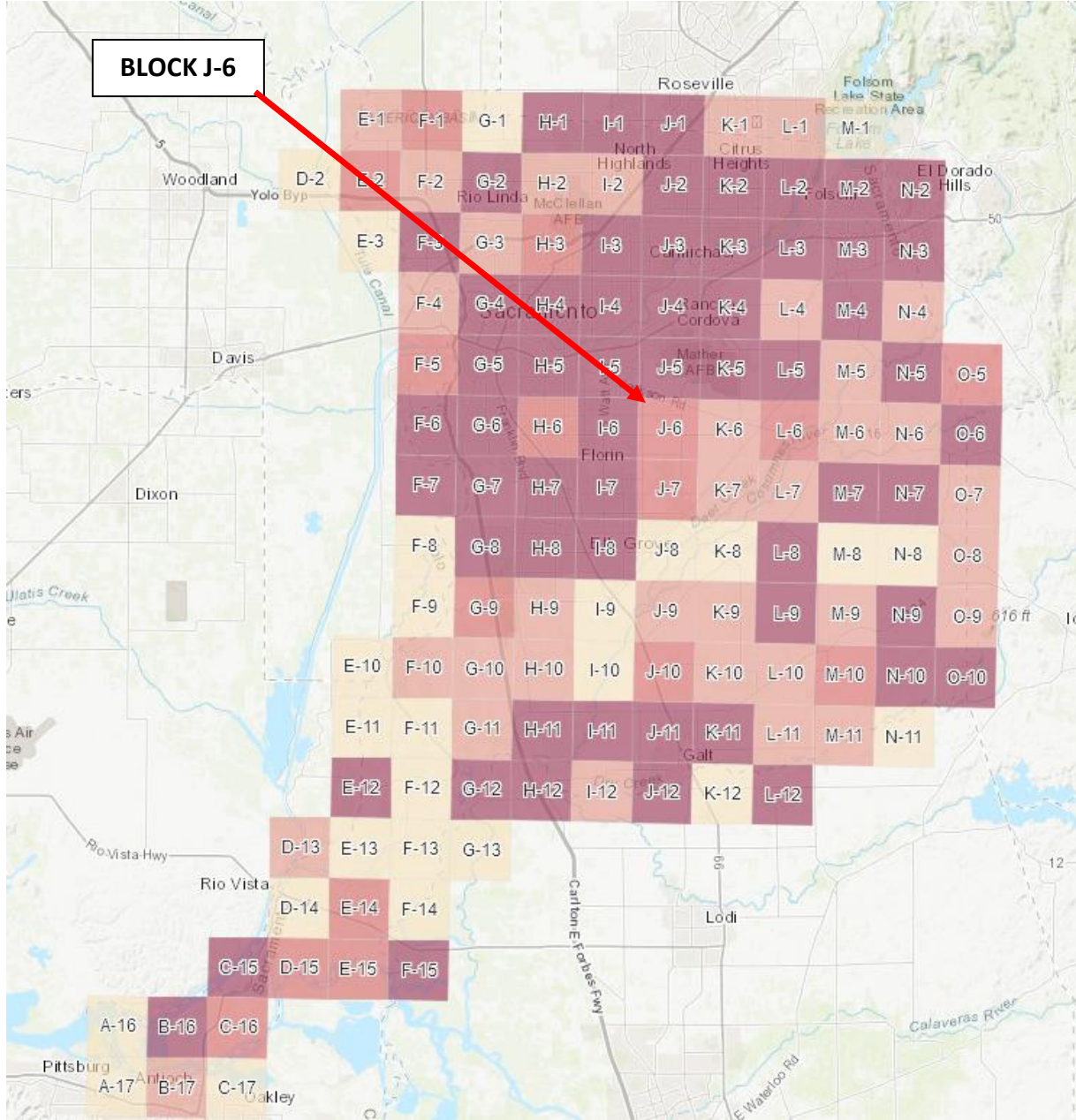


# BLOCK J-6 – mid Sac County

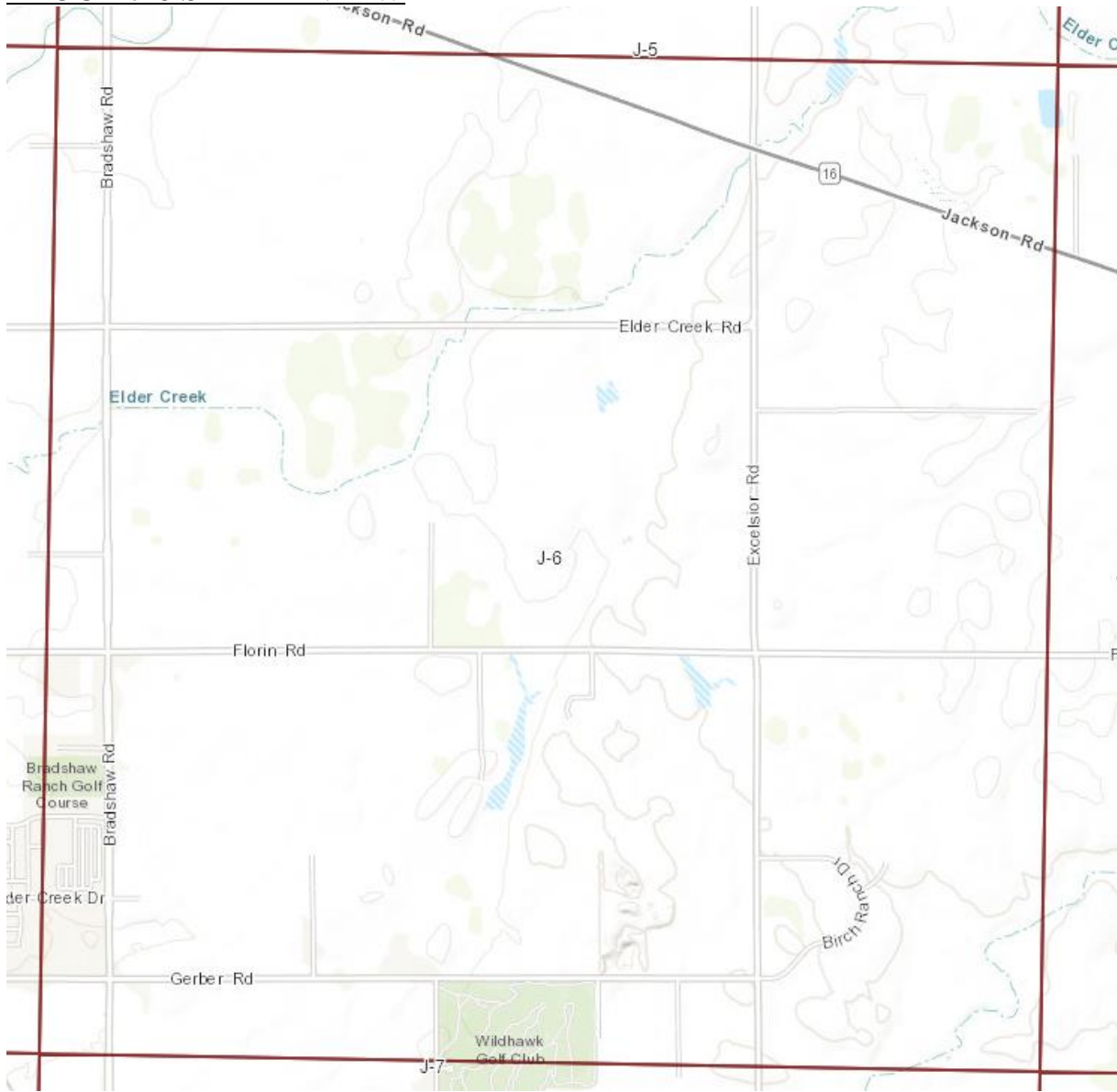
## Includes:

- Mostly open space, grassland, pasture, open ag, rural residential
- Patches of wetlands
- Northern half of Wildhawk Golf Club

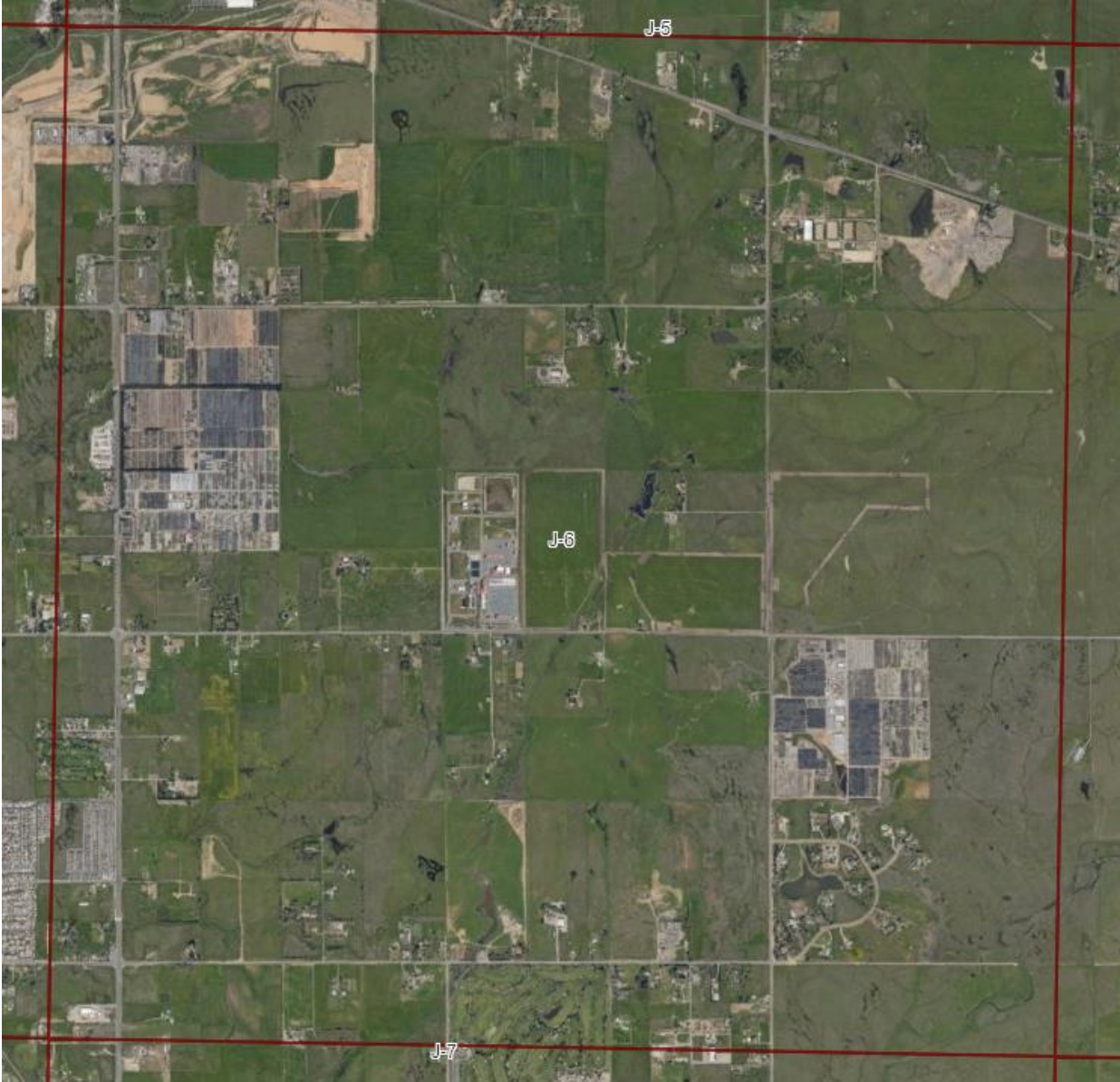
## OVERVIEW MAP



# BLOCK J-6 STREET VIEW



**BLOCK J-6 AERIAL VIEW**



**BLOCK J-6 – Wetland areas north of Gerber Rd (access may be limited)**



**Some likely breeding species NOT yet confirmed in this Block:**

- Mallard
- Red-tailed Hawk
- Acorn Woodpecker
- American Kestrel
- Black Phoebe
- Western Kingbird
- American Crow
- California Scrub-Jay
- Northern Mockingbird
- House Finch
- Western Meadowlark

**- Brewer's Blackbird**